

## President's Message–SFC

Dear Members,

I am honored to be your new president. Sherry Vockel did an excellent job and will be a tough act to follow. "I am counting on all of you for the support I need to be an effective president."

SWA is run by dedicated volunteers. We need some help from our members in finding ways to increase revenue. I ask each one of you to think of possible renters. They could be instructors or groups that have weekly or montly meetings. If you have any suggestions, please let me know.

The yearly schedule is included in the Bulletin. We have four guest shows listed. The May 30 thru June 9 show has been scheduled. The exhibit I was part of last year, was quite successful. As a non-SWA exhibit, you are not limited to representational art. Joyce Barron Leopardo had a fabulous display of her abstract creations. Think about other artists that you would like to display with and contact me to schedule for the May 15–24, or one of the spots in December.

I look forward to see you at our demonstrations and exhibit receivings.

Sincerely,

**Carrie Drilling**

**President**

**[ccdrilling@hotmail.com](mailto:cdrilling@hotmail.com)**

### January/February 2016 Exhibit

<b>1st Place</b>	<b>Yvonne Newhouse</b>	<b>Vogelsang Pass, w/c</b>
<b>2nd Place</b>	<b>T. Jeff Williams</b>	<b>The Good Shepherd, oil</b>
<b>3rd Place</b>	<b>Sherry Vockel</b>	<b>A Quiet Moment w/c Casein</b>

Participants: Catherine Street Delfs, Barbara Todd, T. Jeff Williams, Carrie Drilling SWA, Sharon Harris, Sherry Vockel SWA, Teresa Beyer, Martha Bredwell, Helen Scheel SWA, Khalid Rasool, Rose Nieponice, Yvonne Newhouse, Tomiko Bailey, Rosemarie Willimann, Jim Stinger, Deepali Kapatkar

Thanks to Judges: Edna Acri SWA, Anneliese Drbal SWA and Pat Suggs SWA

Thanks to Volunteers: Sharon Harris, Barbara Todd, Sherry Vockel, Judy Puccini, Mary Mahon, Evelyn Nitzberg, T. Jeff Williams and Rosemarie Willimann

### General Meeting and Demo

**Saturday, March 19, 1 p.m., SWA Gallery**

**Jim Smyth**

**Demonstration on Perspective**

Jim Smyth will be doing a freehand demonstration on everything you need to know about perspective in less than 10 minutes. You will learn how to "see" perspective, how to place figures in a landscape, and how to correct perspective distortions in photos so they look real.

Jim has an extensive background. He received his degree for University of California, Berkeley. He holds a certificate to teach at the Community College and the Adult Education level. While at Foothill College, he developed a course on perspective. He has taught at Pacific Art League, in Palo Alto, the Palo Alto Art Center and the Burlingame Recreation Department. He is currently an adjunct professor of Drawing at the College of San Mateo.

Jim has studied with many famous artists and institutions, including the Academy of Art in St. Petersburg, Russia, and has received numerous awards. He is also co-founder of the "California Academy of Painters" and the "International Visual Arts Foundation."

### General Meeting and Demo

**Saturday, April 16, 1 p.m., SWA Gallery**

**Kay Duffy**

**Watercolor Demo on Flowering Trees in Orchards  
and Other Landscapes**

Kay Duffy is a world-traveled, exceptional artists and active member in many art societies. She has studied under many famous local and nationally known artists.

The County of Santa Clara and Kay's city of Saratoga honored her by selecting her paintings to be sent to their sister cities in Japan and Italy respectively.

Kay is also a Director of the Mid-Peninsula Regional Open Space District, due to her interest in parks and the preservation of open space.

**President’s Message–SJVC**

Greetings from the great Central Valley, Here we are facing another exciting year with plenty of much needed rain. We have many fun things planned for our lovely group of artists. We have planned two paint-outs this year, one in March and one in September with a barbecue, our annual Spring show in May with the site to be announced, and a collaborative demo where three artists will work on one painting in oil and three in watercolor. It sounds like a battle of the artist bands. I’m very excited to see how that will turn out. Of course, we have several demonstrations planned with guest artists as well.

We have been discussing many ways to encourage new membership and we were very encouraged to welcome the nine new members who joined us last year. Our individual members have shared that they are busy with many things this year: shows, outings and local plein air get-togethers, weekly and biweekly classes with live models and field trips to museums. We currently have a Frida Kahlo exhibit at the Fresno Art Museum that a group of us will be going to see.

Elections were held in our January 23rd meeting producing a new list of officers:

- |                           |                       |
|---------------------------|-----------------------|
| <b>President</b>          | <b>Linda Lamb</b>     |
| <b>1st Vice President</b> | <b>Denise McGill</b>  |
| <b>2nd Vice President</b> | <b>Dean Dallin</b>    |
| <b>Secretary</b>          | <b>Shirlee Rehart</b> |
| <b>Treasurer</b>          | <b>Denise McGill</b>  |
| <b>Program Chairman</b>   | <b>Dean Dallin</b>    |

Thank you all for your service and dedication to the arts and our group.

**Linda Lamb**  
**President, SJVC**  
**aka DM**

*Thanks to: Terri Osborne, Pat Suggs SWA, Rosemarie Willimann, Patricia McConkie-Casteel and Sally Patten for their donations to SWA.*

*Welcome to New and Returning Members: Stephanie Chang, Phoebe M. Huey, Maria Poling, Marta Szoboszlay and Louis Maraviglia.*

**SWA CONTACTS**

<b>SFC President/</b>		
<b>Director of Exhibits</b>	<b>Carrie Drilling</b>	<b>650-692-8998</b>
<b>1st Vice President</b>	<b>Ann Basuino</b>	<b>415-564-7254</b>
<b>2nd Vice President/</b>		
<b>Publicity</b>	<b>Judy Puccini</b>	<b>650-737-6084</b>
<b>SJVC President</b>	<b>Linda Lamb</b>	<b>559-275-1597</b>
<b>Web Master</b>	<b>Barbara Todd</b>	<b>650-369-6859</b>
<b>Demos/Workshops</b>	<b>Sherry Vockel</b>	<b>650-922-7474</b>
<b>Secretary/</b>		
<b>Gallery Coordinator</b>	<b>Sharon Harris</b>	<b>650-615-9856</b>
<b>Treasurer/</b>		
<b>Signature Awards</b>	<b>Doris Guzman</b>	<b>415-731-4038</b>
<b>Bulletin</b>	<b>Laura Johnson</b>	<b>650-591-1595</b>
<b>Membership</b>	<b>Loretta Hawkins</b>	<b>650-588-1154</b>
<b>Corresponding</b>		
<b>Secretary</b>	<b>Mary Mahon</b>	<b>650-873-4660</b>

**SCHEDULE OF EVENTS**

**SWA January–February Exhibit**  
**January 14–March 4**

**SWA March/April Exhibit**  
**March 10–April 29**

**Receiving March 5**

**March**

**19**      **Board Meeting**  
**Jim Smyth Demo on Perspective**

**April**

**9, 10**      **Gerold Boyd Pastel/Oil Workshop**  
**16**      **Board Meeting**  
**Kay Duffy Watercolor Demo**

**Center Hours: 11–3, Thursday–Saturday**

*Our condolences to the family of long time member, Tom Freeman SWA, who passed away on December 10.*

**May–June Bulletin Deadline: April 3**

**The Bulletin is published 6 times per year (Jan/Feb, Mar/Apr, May/June, Jul/Aug, Sep/Oct, Nov/Dec)**

**Advertise your workshops, classes, etc.**

Rates: \$10 per ad per newsletter—50 word maximum; \$20 per ad over 50 words. Make checks payable to SWA.

Deadlines for ads and news is the 5th of Dec (Jan/Feb), Feb (Mar/Apr), Apr (May/June) Jun (Jul/Aug), Aug (Sep/Oct), Oct (Nov/Dec).

No brochures or printed matter accepted. Please type your ad and send with your check to: Laura Johnson, 3408 Beresford Ave., Belmont, CA 94002. You may send info to dollsinmin@gmail.com. Check must be received before your ad can be published.

## 2016 SWA Exhibit Schedule

SWA January/February 2016 Exhibit	January 14–March 4, 2016 Receiving January 9, 2016
Board Meeting/Demo	January 16, 2016
Board Meeting/Demo	February 20, 2016
SWA March/April 2016 Exhibit	March 10–April 29, 2016 Receiving March 5, 2016
Board Meeting/Demo	March 19, 2016
Gerold Boyd SWA Pastel Workshop	April 9, 10, 2016
Board Meeting/Demo	April 16, 2016
High School Exhibit	May 5–May 14, 2016
Board Meeting/Demo	May 21, 2016
Guest Show	May 15–24, 2016
Richard Lindenberg Plein Air W/S	May 27–29, 2016
Guest Show	May 30–June 9, 2016
SWA 66th Annual Exhibit	June 16–July 31, 2016 Receiving June 11, 2016; Reception–Awards July 31, 2016
Board Meeting/Demo	June 18, 2016
SWA August Exhibit	August 11–September 9, 2016 Receiving August 6, 2016
SWA September/October Exhibit	September 15–October 28, 2016 Receiving September 10, 2016
Board Meeting/Demo	September 17, 2016
Guy Magallanes W/C Workshop	October 6–8, 2016
Board Meeting/Critique	October 15, 2016
SWA November December 2016 Exhibit	November 3–December 9, 2016 Receiving October 29, 2016
Board Meeting/Demo	November 19, 2016
Guest Show (s)	December 10–24, 2016

## 2016 Demonstrations

Jan. 16	Mike Rodman	Oil, Landscape with Palette Knife
Feb. 20	Rebecca Holland	Oil, Grasses and Clouds
March 19	Jim Smyth	Perspective, How to Put People in Landscape and Correcting Perspective in Photographs
April 16	Kay Duffy	WC, Flowering Trees in Orchards
May 21	Pat Suggs	Pastel Floral, Painting White Poppies
June 18	Guy Magallanes	WC, demo for Workshop in October
Sep. 17	Olga Parr	Acrylic, Painting Seascapes
Oct. 15	Critique	Artist to be Determined
Nov. 19	Terri Ford	Pastel Landscape

## 2016 Workshops

Gerald Boyd	April 9, 10	Guy Magallanes	October 6, 7, 8
Still Life Techniques in Pastel and Oil		Watercolor Techniques	
Fees: \$150 SWA members; \$185 non-members		Fees: \$225 SWA members; \$250 non-members	
Richard Lindenberg	May 27, 28, 29		
Plein Air Oil Painting			
Fees: \$425 SWA members; \$460 non-members			

*www.societyofwesternartists.com*

## January/February 2016 Exhibit Winners



**1st Place**  
*Vogelsang Pass*  
**Watercolor by Yvonne Newhouse**



**2nd Place**  
*The Good Shepherd*  
Oil by T. Jeff Williams



**3rd Place**  
*A Quiet Moment*  
Watercolor Casein by Sherry Vockel

# SOCIETY OF WESTERN *Artists*



**January 16**  
**MICHAEL RODMAN**  
 PALETTE KNIFE OIL PAINTING  
 WITH A LANDSCAPE  
 Saturday, 1:00 - 3:00 PM

**2016 ARTIST LECTURE  
 & PAINTING  
 DEMONSTRATIONS**  
**FREE and open to everyone!**

**Watch renown Bay Area artists  
 demonstrate their painting techniques**  
**Third Saturday of the Month**  
**1:00 - 3:00 PM**



**February 20**  
**REBECCA HOLLAND**  
 TECHNIQUES FOR CLOUDS &  
 GRASSES USING OIL PAINTS  
 Saturday, 1:00 - 3:00 PM



**March 19**  
**JIM SYMTH - USING PERSPECTIVE TO  
 PUT PEOPLE IN YOUR PAINTINGS;  
 CORRECT PERSPECTIVE IN PHOTOS**  
 Saturday, 1:00 - 3:00 PM



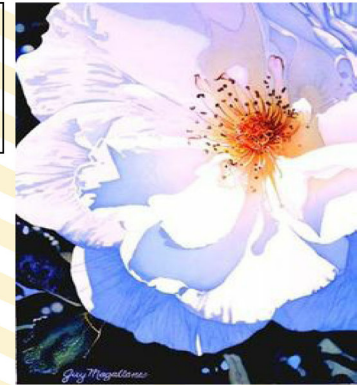
**April 16**  
**KAY DUFFY, SWA**  
 FLOWERING TREES IN WATERCOLOR  
 Saturday, 1:00 - 3:00 PM



**May 21**  
**PAT SUGGS, PSA, PSWC, SWA**  
 PASTEL FLORAL - CREATING WHITES  
 & PERSPECTIVE  
 Saturday, 1:00 - 3:00 PM



**June 18**  
**GUY MAGALLANES, CWA**  
 WATERCOLOR TECHNIQUES FOR  
 BRILLIANT COLOR - WORKSHOP IN  
 OCTOBER  
 Saturday, 1:00 - 3:00 PM



**September 17**  
**OLGA PARR, SWA**  
 ACRYLIC TECHNIQUES USING A  
 SEASCAPE OR LANDSCAPE  
 Saturday, 1:00 - 3:00 PM



**October 15**  
**PAINTING CRITIQUE** - Critique of  
 paintings for SWA members. Please  
 bring 2 paintings for an opportunity  
 to learn how to improve your work.  
 Saturday, 1:00 - 3:00 PM

**November 19**  
**TERRI FORD, PSA, PSWC, SPS**  
 PASTEL TECHNIQUES TO USE IN  
 A LANDSCAPE PAINTING  
 Saturday, 1:00-3:00 PM

527 San Mateo Avenue in San Bruno  
 (650) 225-9250  
 Center Hours: Thursday - Saturday 11:00 AM - 3:00 PM  
 A Non-Profit 501c3 Artist Organization  
 FOR MORE INFORMATION VISIT OUR WEBSITE AT  
[www.societyofwesternartists.com](http://www.societyofwesternartists.com)

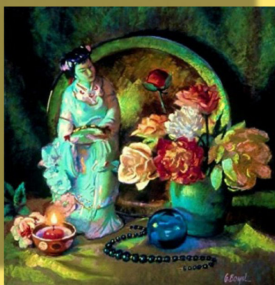
SOCIETY OF  
WESTERN  
*Artists*

# Artist Workshops 2016

Workshops are open to anyone interested in studying with a professional artist.

**Registration Forms** available inside the SWA Art Center or at our website at:

[www.societyofwesternartists.com](http://www.societyofwesternartists.com)



**GERALD BOYD, PSA, PSWC, SWA**  
**Pastel Techniques with Still Lifes - 2 Days**  
Oil Painters Welcome

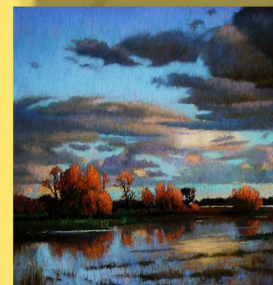
**April 9 & 10, Saturday - Sunday**

9:00 AM - 4:00 PM

Working with a variety of still life set-ups, Gerald will teach you underpainting techniques, how to use rich colors & bold strokes that can be used with any subject matter.

**Beginner to Advanced Students**

**\$150 SWA Members    \$185 Non-SWA Members**



**RICHARD LINDENBERG**  
**Oil Plein Aire Painting Techniques - 3 Days**  
Pastel Painters Welcome

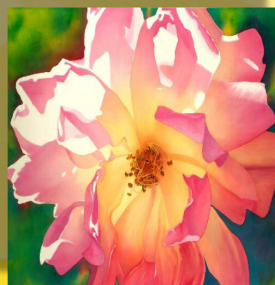
**May 27, 28, 29 Friday - Sunday**

9:00 AM - 4:00 PM

Learn more about design basics, choosing & mixing colors, and seeing proper values. Richard will help you see & communicate more clearly with your paintings. Basic painting experience required.

**Beginner to Advanced Students**

**\$425 SWA Members    \$460 Non-SWA Members**



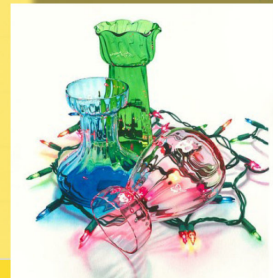
**GUY MAGALLANES, CWA**  
**Gallery Wrapped Watercolor Techniques - 3 Days**  
**October 6, 7, 8 Thursday - Saturday**

9:00 AM - 4:00 PM

Guy will teach you how to create a painting on watercolor paper stretched over canvas stretcher bars from choosing your colors to laying in your washes to varnishing your finished painting.

**Beginner to Advanced Students**

**\$225 SWA Members    \$250 Non-SWA Members**



Society of Western Artists Fine Art Center  
527 San Mateo Avenue San Bruno, CA (650) 225-9250  
[www.societyofwesternartists.com](http://www.societyofwesternartists.com)

A Non Profit 501c3 Art Society



### Master Signature Award for Victoria Chiofalo

Victoria Chiofalo SWA, mwa received her Master Signature Award from the California Watercolor Association on February 28 with her watercolor painting, “Trio.” She has been accepted in six CWA Nationals.

Victoria will be featured in North Light Books’ *AcrylicWorks 3: Celebrating*

*Texture*, edited by Jamie Markle. Her painting, “ARIA,” was accepted and will be published along with her bio.

CWA’s 46th NATIONAL EXHIBITION runs January 5–February 28, 2016 at the Academy of Art University Cannery Galleries, 2801 Leavenworth St., San Francisco. YOU REALLY SHOULD SEE IT.

### CULTURAL ARTS COMMISSION–City of South San Francisco Utility Box Mural Project

The SSF Cultural Arts Commission invites artists and creative community members to Color Our Streets EXTRAORDINARY by transforming unsightly, drab utility boxes into awe-inspiring works of art! Distinctive images that celebrate beauty, offer a positive outlook and create a sense of place are welcome.

For more info: “Cultural Arts” page at [www.ssf](http://www.ssf).

### Thanks

Many thanks to Jeff Barton, President of the Millbrae Camera Club, for taking his time to fix our front door so it wouldn’t slam shut. The MCC rented our Center for their club’s photography exhibition.

*Annual membership dues were due by January 1. If you haven’t submitted yours, please do so asap.*

### Directions to SWA San Bruno

**From 280:** take the San Bruno Exit east (towards the Airport). At San Mateo Avenue (approximately 1/4 mile) turn right on San Mateo Avenue.

**From 101:** exit San Bruno Avenue west over the freeway. San Mateo Avenue is immediately after the CalTrain elevated track, turn left. Caltrain station is two blocks south on San Mateo Avenue.

### SOCIETY OF WESTERN ARTISTS

527 San Mateo Avenue  
San Bruno, CA 94066