

presents a 2-Day Workshop with

## TERRY MIURA

“Plein Air in Oil”

Pastel Painters Welcome

**September 28, 29 2012**

Saturday, Sunday 9:00 - 4:00PM

at the **Society of Western Artists Gallery**

2625 Broadway Street Redwood City, CA

**Beginner- Advanced Students**

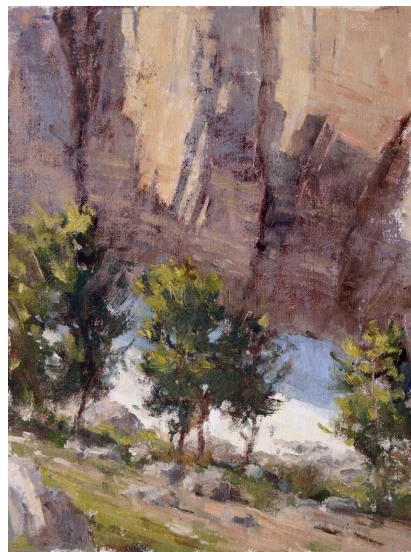
\$300 SWA Members \$350 Non Members

REGISTRATION FORM on back

or visit our website at: [www.societyofwesternartists.com](http://www.societyofwesternartists.com)



Open to all levels of painting experience, this workshop each day will be spent painting on location around the Peninsula. Terry will give on site demonstrations along with working individually with each student. Students will also receive a full color, 80 page illustrated book to accompany the workshop. Pastel painters are welcome.



After graduating from Art Center College of Design in 1990, Terry Miura headed out to New York City to pay his dues. There he spent six years working as a freelance illustrator, creating imagery for such clients as Time, Newsweek, Sports Illustrated, Random House, GRP Records, just to name a few.

In between illustration deadlines, he painted his beloved New York City, and began a career as a painter by showing his work in neighborhood cafes, hair salons, juried shows--all of which were plentiful in the Big Apple. Before long one of his cityscapes was noticed by a gallery owner, and he had his first 'real' show in 1995.

After returning to the West Coast in 1996, he continued to paint and show New York-inspired cityscapes which were very well received, but as he no longer lived in the big city, his art began to change as well.

“I read in many a landscape painter’s statement that they paint the great outdoors because they love being out there in nature, or that they’re celebrating the Glory of our Creator... but I can’t relate to any of that,” Miura laughs. “I’m interested in the language of landscape painting, and how I might use it to explore the mysteries of emotions, memories, and identity.”

To that end, Miura does not limit himself to painting traditional landscapes. “I’m looking for subtle emotional responses,” he explains. “I don’t get that from just trees and rivers. Buildings, people, atmosphere, light... any subject can trigger an emotional response. I’m perpetually trying to figure out what that trigger is.”

His works are represented by Thomas Reynolds Gallery in San Francisco, Anne Irwin Gallery in Atlanta, Anne Loucks Gallery in Chicago, Sekula’s in Sacramento, and Holton Studio in Emeryville, CA.

Terry’s works can be viewed at his website:  
**[www.terrymiura.com](http://www.terrymiura.com)**